



National Engineers Week • February 15-21, 2009

# Thursday, February 19

## INTRODUCE A GIRL TO ENGINEERING DAY

### A Call to ALL Maui Engineers!!!

- Less than 10% of American engineers are women
- Only 5% of Hawaii engineers are women
- Studies show that girls begin losing interest in math and science in middle school

With the limited resources on Maui, your support is greatly needed. Join others across the country for the 9<sup>th</sup> annual "Introduce a Girl to Engineering Day" event on Thursday, February 19, 2009. Together, we can challenge those daunting statistics early on before students reach the high-school age.

The goal of the event is to expose girls to the field of engineering and to encourage them to become engineers themselves. Host engineers can be female or male. The event is free and open to all 7<sup>th</sup> & 8<sup>th</sup> grade girls. Lunch and refreshments will be provided.

Just by volunteering your time as a host engineer through a half-day of job-shadowing, you can make a difference! Proof is in the testimonies provided by past IGED participants:



*"I enjoyed going to different places with my engineer to get a better picture of what she does. (This event) has really impacted my desire to pursue engineering because it showed me how much cool things engineers do and how they help make a difference." ~ Brytne, Kalama*



*"...what surprised me most was that engineers mean so much to the society. I didn't know that engineers did so much. (This experience) has made me want to do it (engineering as a career choice) more! ~ Anna, Lokelani*

*"I really liked meeting girls my age and finding common interests in engineering." ~ Kiana, Lahaina*

*"(This event) showed me what an engineer does and showed me that I might be interested in an engineering career. Before, I didn't consider it because I didn't know what it was." ~ Emily, Kalama*



This local event is made possible through the Maui Economic Development Board's Women in Technology Project, in partnership with the County of Maui, and the Maui Chapter of the Hawaii Society of Professional Engineers.

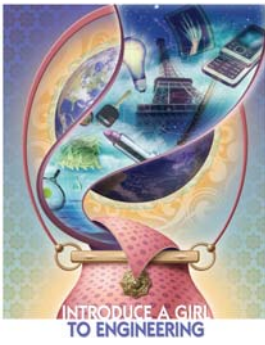
For more information or to volunteer as a mentor and host engineer, please visit [www.womenintech.com](http://www.womenintech.com), call Jenilynne Salvador (808) 875-2332 or email at [jeni@medb.org](mailto:jeni@medb.org).

Visit [www.eweek.org](http://www.eweek.org) for more Engineering Day and Engineers Week.

information on Introduce a Girl to

**ENGINEERS WEEK® 2009**  
FEBRUARY 15-21





## INTRODUCE A GIRL TO ENGINEERING DAY 2009 ENGINEER REGISTRATION FORM

To register, complete this form and fax to Jeni at 879-0011 or mail  
1305 N. Holopono Street, Suite 1, Kihei, HI 96753  
by February 4, 2009

Name \_\_\_\_\_

Job Title \_\_\_\_\_

Organization \_\_\_\_\_

Mailing Address \_\_\_\_\_

Work Phone \_\_\_\_\_ Mobile Phone \_\_\_\_\_

Fax \_\_\_\_\_ Email \_\_\_\_\_

Please tell us a little about yourself:

Type of Engineer: \_\_\_\_\_

Why did you choose engineering as a profession? \_\_\_\_\_

\_\_\_\_\_  
\_\_\_\_\_

Work Description: \_\_\_\_\_

\_\_\_\_\_  
\_\_\_\_\_

What do you like most about your job? \_\_\_\_\_

\_\_\_\_\_  
\_\_\_\_\_

Hobbies and Other Interests: \_\_\_\_\_

\_\_\_\_\_  
\_\_\_\_\_

### Education Background

High School: \_\_\_\_\_

College(s) attended and degree(s) earned: \_\_\_\_\_

\_\_\_\_\_

Thank you!



Thursday, February 19

## AGENDA

Revised January 28, 2009

- |                        |  |
|------------------------|--|
| 7:45 – 8:00 a.m.       | Student and School Chaperone Registration<br><b>Maui Community College, TBD</b> <i>(light refreshments will be served)</i>   |
| 8:00 – 8:45 a.m.       | Welcome & Video<br>Teams/Groups<br>Engineering Activity  |
| 8:30 - 8:45 a.m.       | Engineers Report   |
| 8:50 – 9:00 a.m.       | Matching of Students with Host Engineers   |
| 9:00 a.m. – 12:00 p.m. | Students Visit Host Engineer's Workplace<br><i>(please show the girls your place of work and, if possible, a work site that showcases the work you do in the office prior to its physical existence)</i> |
| 12:15 – 1:40 p.m.      | <b>Lunch, Maui Community College, TBD</b><br>Video presentation<br>Engineering Activity<br>Survey for engineers<br>Survey for students<br>Closing Remarks  |
| 1:45 p.m.              | Students return to school  |

Please note that agenda items may be subject to change.